



#### Value of the Week

**Excellence.** We do our best to achieve excellence. Have you done your best?

#### School Calendar

##### September

**22** Year 5&6 STEM Transition Day

**22-23** Year 9&10 Cake Decorating



8 Meade Street, Bulahdelah 2423  
Phone: 4997 4329 Fax: 4997 4512  
bulahdelah-c.school@det.nsw.edu.au

# BCS ASK, R U OK?





## PRINCIPAL'S REPORT:

### Advice for parents:

The following advice for parents assists in limiting students' exposure to harmful online

content:

- Engage in your child's online activity and discuss the types of apps, websites and games they are viewing to ensure content is age-appropriate
- Make use of parental control on devices to help limit your child's online exposure
- Help your child report and block inappropriate content on social media or apps
- Encourage your child to talk to you about anything upsetting they view online
- Visit [www.esafety.gov.au](http://www.esafety.gov.au) for further advice on apps, social media and online safety issues.

### Tell Them From Me Parent Survey

This Term, our school will be participating in the *Partners in Learning* parent survey, another part of the *Tell Them From Me* suite of surveys (student, teacher and parent surveys) on student engagement. The survey asks parents and carers questions about different factors that are known to impact on student well-being and engagement.

Running this survey will help our school understand parents' and carers' perspectives on their child's experience at school. These include: communication between parents/carers and staff, activities and practices at home and parent/carer views on the school's support of learning and behaviour. This valuable feedback will help our school make practical improvements.

The survey is conducted entirely online on smartphones, iPads, tablets, laptops or computers. The survey will typically take 15 minutes or less to complete and is completely confidential. The parent survey is open now and will close on the 23 October. Although participating in the survey is entirely voluntary, your responses are very much appreciated.

More information about the survey is available at: <http://surveys.cese.nsw.gov.au>. To access the survey for Bulahdelah Central go to: <http://nsw.tellthemfromme.com/83jwh> *George Frangos*

### Years 8-11 Subject Selection

Subject selection forms were due back last Wednesday. If there are any students who have not handed in these forms, please make sure they are handed in by Wednesday 23 to Chris Gladys.

### Year 11 Exams

**Wednesday 23/9**

English

**Friday 25/9**

SLR (Sport, Leisure & Recreation) & Mathematics

### Reports Handed Out

**SVC**

End of Term 3

**Year 11**

Week 1 Term 4



### Important Update to Parents and Carers of Year 12 students

Traditionally, the Year 12 Graduation Assembly is held on the last Thursday of Term 3 each year.

This year the Department of Education has extended the teaching and learning time for HSC students to include Week 1 of Term 4, 2020. As a result, and due to the ongoing uncertainty created by the current Covid-19 health crisis, Bulahdelah Central School has decided to host the Year 12 Graduation Assembly on Thursday, 15 October 2020 (Week 1, Term 4).

The graduation will be dependent upon the latest advice from the Department of Education in the lead up to our proposed date. Any future updates will be passed on to families as soon as possible. *Kim Rigley - Year 12 Advisor*

### Assessment Tasks Due Term 3/4

TERM 3/4	WEEK 10	Term 4 WEEK 1
<b>Year 9</b>	English Ag Photo	Photo Metals/ Auto Timber (100 and 200 hour) Electronics iSTEM
<b>Year 10</b>	PDHPE History	Photo Metals/ Auto Timber (100 and 200 hour) Electronics iSTEM





**R U OK?** Day was held on Thursday, 10 September and our aim was to spread awareness about mental health and the suffering of some individuals faced during the isolation period.

After a hard year with COVID-19 the SRC (Student Representative Council) thought that we would reward the whole school with a FREE sausage sizzle to create a positive environment which everyone could enjoy. The day was successful, the SRC enjoyed themselves while cooking and catering and we also received multiple positive comments from some students. Due to this feedback we have also decided to hold a Day for Daniel BBQ and to raise awareness of child safety, which will be held on Friday 30 October. *Madison Jego-Rolfe*



# HSC Major Industrial Technology Work

The yearlong efforts of our Industrial Technology - Timber students have come to fruition and are now on display in the school Library. This year has been different from the usual procedure for marking as the HSC markers did not visit any schools due to COVID 19. Instead, each school and their projects were marked by a teacher lead marking team and their folios have been sent to Sydney to be externally marked. The projects were well presented and represented the student's interests and showcased creativity in timber design.

All students completed quality work and developed a range of skills and knowledge. Congratulations to the students who have worked hard to ensure their projects and folios were well presented and reflective of their efforts.

Special thanks to Dave Rose and Jake Kinnear for their assistance throughout the year. Also, a big thank you to Chris Gladys for his help, guidance, and mentoring. *Brent Smith - Head Teacher Technological & Applied Studies*



## ***Lachlan Blows- Lowline Entertainment Unit***

Modern designed Lowline entertainment unit made from Victorian Ash timber. Consists of two doors with opaque acrylic glass and two drawers' with soft close runners. Features Sydney Blue Gum door inlays and edge pieces. Finished in Mirotone water based and Mirowax.



## ***Sally Curnow- Entertainment Unit***

Traditional styled entertainment unit with a modern twist. Made from Sydney Blue Gum timber with push to open drawers and cupboard door. Unit top has a laser cut intarsia design of a tree pattern with coloured resin filled sections depicting the four seasons. Finished in Mirotone water based.



### *Khloe Middleton - Study Desk*

Study desk made predominately from Victorian Ash. Desk consists of two drawers with dovetail constructed drawers and two cupboards. Featuring soft close runners and hinges. The tabletop is a parquetry design consisting of Queensland Silver Ash, Victorian Ash and Sydney Blue Gum laminated together in an original and unique design. Finished in Mirotone water-based.



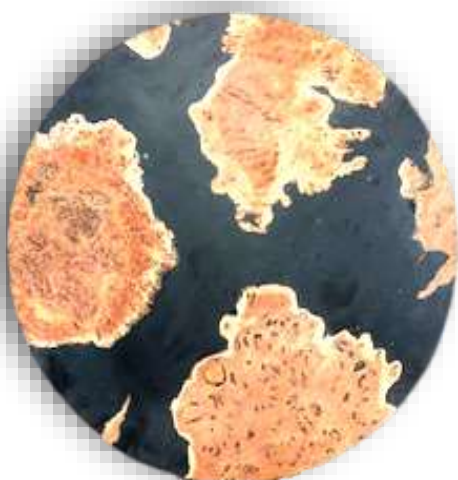
### *Harry Plummer - King Size Bed*

A King size bed made from mixed Australian hardwood recycled timbers. Headboard has a herringbone design. Bed has unique dovetail keyed system that locks the bed head and foot to the rails without the need for nuts, bolts, or screws. Finished in Danish Oil.



### *Flynn Weiley- Resin River Flow Coffee Table*

Round coffee table incorporating timber burls and black resin to create a river flow table. The table has 3 push to open drawers which have curved fronts which continue with the round circle design. Timbers included are Tasmanian Oak, Red River Gum and Forest Oak. Finished in Mirotone water based.



### *Taylah Smith- Dresser*

A traditional designed dresser with mirror. It has a herringbone pattern parquetry on the top with resin filled centrepiece. Rail and style designed draws and doors. Project consists of two doors and 5 dovetail constructed drawers. On top of the dresser is a two drawered jewellery box with laser engraved draw fronts, which can be removed from the dresser.

Project is predominately built from Victorian Ash, but includes Camphor Laurel and American Cherry in alternating colours in the herringbone design. Finished in Mirotone water-based and Mirowax.



### *Guy Willis- Ibanez Guitar*

This guitar has been built by laminating White Cedar for the guitar body, shaping red Mahogany as the neck and planning Rosewood for the fret board. This was a very intensive hand skills project. Acrylic pick guards and covers were computer aided designed and cut out using the laser cutter. It has been designed in the image of an Ibanez Guitar, with a bit of custom flair. Finished in Danish Oil.







# Virtual Open Day 2020

This is Charles Sturt. This is your future.

Book your spot!

→ [csu.edu.au/openday](https://csu.edu.au/openday)

On Monday 28 – Wednesday 30 September, in conjunction with our Future Moves team, Charles Sturt university will be hosting virtual HSC lectures for English, Advanced English, Maths, Advanced Maths, and Chemistry. These events are managed by InspirED – leaders in HSC enrichment events. Their programs have delivered a 17.5% average improvement in high school results compared to those predicted for each student.

Our school fits the criteria for this opportunity. We invite your HSC students to these sessions – all paid for by Charles Sturt University! All they need to do is register here: <https://inspired.edu.au/charles-sturt-university/#>

## Schedule

### Monday 28 September

Choose between Maths Standard, Advanced Maths, English Standard or English Advanced

### Tuesday 29 September

Choose between Maths Standard, Advanced Maths, English Standard or English Advanced

## Wednesday 30 September

### Chemistry

Students will receive:

- Zoom webinar lectures from HSC teachers who are also markers, sit on exam committees and write key textbooks
- Soft copy lecture booklet with topic notes, further questions, example responses and/or worked solutions
- Lucky door prizes of UE Boom speakers for each session
- Campus activities on their break
- Access to current university students for any post-school questions.

Each session has limited availability, so we do recommend that students register as soon as they can. Registrations will close Monday, 21 September, or once places are filled. Students can register for as many sessions as they would like. *Bernadette Gammon, Marketing Coordinator, Student Recruitment - Charles Sturt University*



## Student Representative Council



The SRC and the school canteen have decided to implement themed fun food days each week. This day will be on each Friday lunch with foods such as Taco's, Hotdogs, Fried rice and more.

This will begin in the canteen Week 1 of Term 4 with Nachos being the first Special on offer.

Food will need to be ordered sometime during the week before 9am. For more information to know which food is held on the week, SRC will place posters up with the food and price for promotion around the school. *Casey Connell - SRC Co-ordinator*



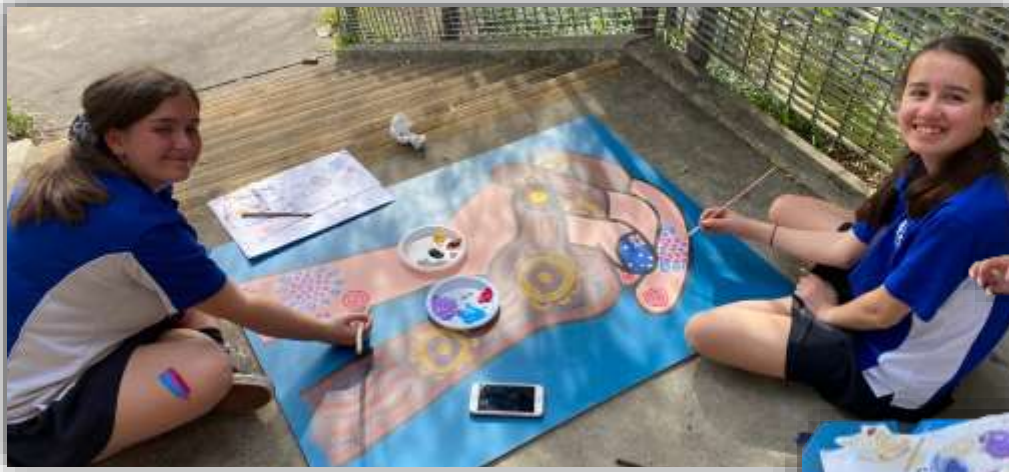


There has been a lot of progress made by the 'Go-Getters' in the last couple of weeks.

The Bulahdelah CWA garden has been painted and planted by Year 9 and 10 Agriculture students with Magnolia Little Gem, Lomandra and native Pig Face which will be hot pink when in flower! We still need to work on the bench seat and plaque, then this section of the COLA upgrade will be complete.







## The Koori Group - Creating a Better World

Linda Drenkhahn successfully applied for a grant from Charles Sturt University. These funds were put towards the completion of a mural designed and executed by the Koori Kids group here at Bulahdelah Central School which reflected the ethos of 'Creating a Better World'.

The newly formed Koori Kids Sport group worked on designs for the murals which were then amalgamated into 6 different designs. They will be placed upon completion in the newly renovated Secondary Cola area in the school. Groups of students have taken responsibility and ownership for the different murals and are working each week on completing their fabulous designs. The murals incorporate messages that include, 'At One With Nature', 'Darkness to Light: Strength from Our Roots', 'Ocean Life', 'Where Land Meets Sea', 'People Coming Together' and a recreation of the Aboriginal flag using the hand prints of our Indigenous students. The murals reflect the local area and demonstrate the many ways that we can create a better world by working together and looking after our environment. *Michelle Gray - Aboriginal Education Co-ordinator*







The senior construction students joined the Go-Getters when 'Tim' who is a Brick and Block teacher at TAFE NSW came in to teach the boys the art of brick laying. A BBQ and serving area is under way, with provision for a pizza oven to be added in the future.

A large garden bed made of treated pine sleepers is almost complete and planting of this garden bed should be done by the end of Term 3.

This area will also have a bench seat and plaque. The beautiful timber slabs to make bench seats for these areas have been very generously donated by the Dorney family and Newells Creek Sawmill.







**I am really proud of the students who have worked together so well during this term to improve the Secondary COLA area, and the staff who have supported them, in particular Dave Rose and John Barry.**

*Linda Drenkhahn - Careers Advisor*





# MAJOR



HSC Visual Art students been hard at work, completing their major works for 2020. Works include paintings, drawings, sculpture and etchings. Extra incentive has been provided by the kind addition of the Galleries in the Garden Student Award which provides a \$500 cash prize and opportunity for students to show their work in the Myall Gallery during the school holidays in October.

This year, students have found Covid 19 restrictions challenging, but under the expert guidance and resourcefulness from Art teacher, Sue Cross, they have resourced an individual art space in the art studios and at home, in case of lock down. Weekend workshops were also established to ensure students had additional time to complete their works.

Congratulations to all students and their teacher, Sue Cross, for creating such creative and reflective artworks. It has been fantastic to be part of this creative arts school and community initiative.

*Vanessa Shultz - Head Teacher English*

## **Thanks Dad** (Drawing)

My artwork is about my connection with my dad and how he's always been there by my side helping me with every aspect of life. He supports me and allows me to succeed and achieve my goals. He has been a great influence on the way I have grown as a person both physically and mentally. *Jake Billingham* (pictured top right)

## **Terri Dragon** (Mache)

I love the movie 'How to Train your Dragon'. Terri is a character out of this movie. Even though he is seen as a monster, looks can be deceiving. You can be friends with anybody, it's all about what they feel inside that counts. *Harrison Hughes* (pictured







### **Mi Familia** (Painting)

My artwork is about unity between my family and our culture. The title 'Mi Familia' is Spanish for my family. The use of traditional Chilean flowers (Lapageria, Copihue) also connects us to the culture.

My body of work is very special to me. It shows the connection I have between my family and the colour story connects each aspect of the painting together.

*Annabella Whyman*



### **Myself in Pieces** (Sculpture)

A person's identity is unique and can not be copied, with this being said my body of work is about me and my identity. It gives insight into the good and bad aspects of me as a person. My work consists of 18 small clay figures, each painted to represent a piece of myself and a larger white gloss glazed sculpture of a bust representing myself as a whole.

My inspiration for this artwork was influenced by the artworks of Frida Kahlo. She paints artwork on canvas which reflects on her own life and experiences. Each of the individual figures portrays a separate piece of my identity. It invites difference audiences to develop their own understanding into the complexities of my life through this body of work.

*Kalani Minns*



### **Cityscape** (Drawing)

My artwork is about a city. It is a two-point perspective drawing. *Joel Keegan*





### **Beneath the Surface** (Etching)

Based on my own experiences, 'Beneath the Surface' is about how someone can seem to be doing well mentally. A smile, laughter can act as a facade to deep thoughts in one's mind. Someone could be struggling and you would never be able to tell.

It also confronts the stereotype that depression is just sadness, when it can involve a wide range of emotions like anger. The idea is that someone can seem a certain way, but underneath they are completely different, often hidden to not bother others with their problems. The three etchings represent the surface, anxiety and instability simmering beneath that. *Brendan Wilkinson*



### **Mirror Image** (Painting)

This collection of works is about mine and my mother's relationship and our individual experiences with humanity. Although very different we are similar in many ways. *Natasha Veith*



### **Failed Experiment** (Drawing)

A scientific mutation drawn out of imagination. *Shea Matenga*



Galleries in the Gardens

STUDENT  
**ART  
AWARD**

An initiative by  
Galleries in the Gardens Student  
Art Award to encourage & reward  
excellence in HSC Visual Arts.

## ART EXHIBITION

Showcasing entries by HSC Visual Arts students  
from Bulahdelah Central School

Dates: Wednesday 7 October to Sunday 11 October, 10am to 3pm

Place: The Gallery, on the waterfront café strip  
at 81 Marine Drive, Tea Gardens





### **The Future is Female (Paint & Collage)**

My artwork is about women's empowerment, focused on society's views on women/beauty standards and the feminism movement in Chile, where they wear masks. My artworks hopefully inspire and empower girls to be confident about themselves and their body.

My interest in the Chilean feminist movement comes from where my mother and grandmother come from and how they are the most powerful and influential women to me. The masks represent empowerment and passion, which I hope shows in my work. *Celeste Stubbs*



### **Beauty in Bodies (Painting & Sculpture)**

In my body of work I present three glazed clay sculptures which manipulate different body forms of the female anatomy. I have also painted a synthesise which accompanies the common theme of the sculptures.

In society there is a view and opinion on women's bodies and how they should look. My body of work challenges society's views on women's bodies and what is considered acceptable. *Shona Miller*



### **Doomsday (Painting)**

My work is a cartoon version of the self-produced Rap/Hip Hop artist MF DOOM. This reflects his creativity through 'Simple' simplicity with very little effort/detail. His finished works show meaning with very little given. My paintings entitled 'Doomsday' represents my doomsday.

The reason I chose this as a theme is because this year, 2020, has been a doomsday and we may as well burn with 'Simple' simplicity. *Shannon Powick*





My 5 Line Art paintings are about an indescribable bond that my mother and her two daughters have. Expressing anxiety that the three of us struggle through everyday. These 5 paintings are linked together to

embrace the bond with my sister and mother. The art represents a way to express my thoughts and feelings that my sister and mother share that is a common issue for many other people. *Abby-Jo Banks*



### Hyori Ittai - Two Sides of the Same Coin (Painting on Board)

My two pieces are post modern appropriations of The Creation of Adam and Mona Lisa. The Creation of Adam appropriation draws inspiration from the two characters from Japanese anime "HunterxHunter". The fate and symbolism between the two characters is very sophisticated and is 'Shakespeare like'.

The coin where their fingers meet, says 'love' in Japanese. The Mona Lisa appropriation is of a character from the Japanese anime 'Naruto' this character in particular foreshadows bipolar, multiple personalities and many more mental illness. I show this due to the lack of mental health support in society. *Reuben Brough*



### Idols and I (Print Making Etchings)

My body of work 'Idols and I' is a series of portrait etchings including a self portrait. My work reflects my connection with 4 popular culture figures who

have positively impacted my personal life in multiple ways. My self-portrait connects me to the others through my title. *Indianna McDonald*





## Crazy Talent

Our Vertical Curriculum Drama class has just completed their HSC Individual Performances for visiting examiners. All students gave their best performances yet and kindly supported each other on the day. It was certainly challenging this year, with students not allowed to have an audience. It is difficult to sustain character on stage, innovatively manipulating set, props and space for 6-8 minutes. Our students made individual and risky choices entertaining the marking panel and reflecting in writing about the creative choices they made in their logbooks. All students should be immensely proud of themselves.

Jack Cunich, dressed in ancient toga costume, entertained as Virgil in Dante's Seven Circles of Hell, reciting Latin and creating a powerful soundscape and amphitheatre with the Drama Room's new stage. Jake Billingham presented a chilling and darkly humorous monologue about keeping up with the neighbours, demonstrating excellent characterisation and physicalisation.



Tahlia Read was equally compelling as the 1950 housewife trying to maintain her schedule in a traditional world, finally descending into mania and a battle with a cockroach threatening her world.

Sally Curnow delighted her audience as the 'perfect' wife struggling with her husband's obsession with their perky neighbour. Maddison Jego presented a contemporary young woman mistaking social cues and trying to conform to stereotypes. Lastly, Chloe Eveleigh, clad in wedding dress, veil and covered in blood, delivered an hilarious monologue on what can happen in a relationship if you forget to put the butter back in the fridge. *Vanessa Shultz- Drama Teacher*







## DEPUTY PRINCIPAL INSTRUCTIONAL LEADER:

### Term 3

My word, how the last ten weeks have flown back at school. Well done to all the K-6 students who have been working very hard, in what are still not quite 'normal' circumstances.

The teachers have also been busy participating in new training and development courses. These have included Close Reading for teachers of Years 3 -6. This training provides strategies for students to understand, analyse and interpret what they are reading. Teacher's work with a small group (no more than 4) of students to explicitly teach these strategies.

The teachers in Years K-4 have been participating in new learning based on the language and literacy of mathematics. This pedagogy explicitly teaches students strategies to be able to explain what they are doing when working mathematically to solve problems and show what they are thinking.

Mathematicians often take time to think about problems and ideas. When assisting your child with their mathematics homework, think of your job like a sports coach – you don't need to be the best player to become a really good coach. You can be a great coach for your child by listening carefully to your child's thinking, asking questions (instead of telling) and encouraging them.

You might say things like:

- "Can you share your thinking with me?"
- "I like how you're thinking about..."
- "I wonder if there are any patterns here...I wonder if they might be able to help us?"
- "Do you notice anything interesting about..."
- "What if we try working backwards?"
- "I wonder if we could think about this another way?"
- "I like how you came back to that idea and thought about it differently."
- "Let's take a break for 5 minutes! Sometimes I need a brain break to give me some space to think."

### Final Pizza Voucher Winners for Term 3

This week's pizza voucher winners are Indy Watling (Year 2) and Breanna Loveday (Year 4). Both these young ladies always try their hardest at all times to achieve great results. They are both compassionate and helpful students towards their peers and teachers and always arrive at school with a smile on their face. Congratulations Indy and Breanna on all your achievements.



Thank you again to the Lady Jane Motel for their sponsorship in recognising and supporting great young Australians.

In closing I wish everyone a safe and enjoyable holiday and remember if around water, swim between the flags on beaches and never swim alone. Staff look forward to welcoming the students back for Term 4. *Debbie Booth*

## FOSTER & KINSHIP CARER INFORMATION SESSION

**OCTOBER 15TH 2020**

**9.30 – 11.00 OR 11.30 – 1.00PM**

**SPEAK WITH CARERS AND BIRIPI STAFF AND  
FIND OUT HOW YOU CAN HELP  
ABORIGINAL CHILDREN IN YOUR AREA**

**102 VICTORIA ST TAREE**

**PH: 02 6591 2411**

**E: [BACSRECEPTION@BIRIPI.ORG.AU](mailto:BACSRECEPTION@BIRIPI.ORG.AU)**

**PLEASE RSVP FOR COVID SAFETY**







## Bronze & Silver Awards

*Presented to*

### Kindergarten/Year 1 Year 1/2

Florence Dawes Jack Bates

Riley Dixon Lilly Baughan-Carpenter

Saxon Evans Jaxon Styles

James Gairns

Jordana Gordon

Kaius King

J-Lee Lawrence

Gemma Lucas

Adam Mohring

Wade Pringle

Nelly Raines

Trinity-Lee Stafford

### Year 2/3

Jaida Morgan

Abbiegail Ray

Indy Watling

### Year 5

Jaydah Cassar

Lasey Baggins-Cupitt

Henry O'Connell

Isaac Redman

Salome Reitsma

Mindy Sullivan

Claire Tufrey

Nikita Wheaton

### Year 6

Chilali Baggins-Cupitt

Sheena Lamborn

Alex Lucas

Frankie Roberts



*Silver Award*

Lasey Baggins-Cupitt

Jaydah Cassar

Henry O'Connell

Salome Reitsma

Mindy Sullivan

Frankie Roberts

A reminder that Bronze, Silver and Gold Awards need to be kept in order to receive further awards (i.e. when a student has 3 Bronze Awards these should be handed in to receive a Silver Award...and so on). *Rod Pye - Assistant Principal*





# BULAHDELAH Central School

*Strive to Achieve*



Stay safe over the  
holidays.

See you back here on  
Monday, 12 October

Next Newsletters for Term 4: 19 October; 2, 16, 30 November; 14 December

End of Term 3: 25 September

 like us on  
facebook 

<https://www.facebook.com/pages/Bulahdelah-Central-School>

[www.bulahdelah-c.schools.nsw.edu.au](http://www.bulahdelah-c.schools.nsw.edu.au)  
Ph: 4997 4329

***“The mediocre teacher tells. The good teacher explains.  
The superior teacher demonstrates.  
The great teacher inspires.”***

*William Ward*

