



Strive to Achieve

Bulahdelah Central School

Delivering Quality Education –

Teaching Today, Educating for Tomorrow

PRIDE: Participation, Respect, Innovation, Determination, Excellence

Term 4
Issue
16
01/11/10

Tall Timbers Newsletter

WHO'S WHO AT BCS Executive

Principal: Don HUDSON

Secondary Deputy Principal
Roger HORTON

Primary Deputy Principal
Sally THOMPSON

Secondary Head Teachers:

**English/History/CAPA
Faculty** Vanessa SHULTZ
Maths/PE Faculty

Wayne HOLT

TAS/LOTE Faculty

Christopher GLADYS

**Science/Social Science
Faculty** Michael STACE,

Welfare Faculty

Deborah GILBERT

Primary Assistant

Principals:

Stan BACKHOUSE

Carol WILLS

School Admin. Manager

Sue BACKHOUSE

HOW TO CONTACT US

Mail: 8 Meade Street
Bulahdelah 2423

Telephone

4997 4329 Admin Office

4997 4766 Canteen

Fax 4997 4512

Email bulahdelah-
c.school@det.nsw.edu.au

Web Site bulahdelah-
c.schools.nsw.edu.au

DEFENCE FORCE BREAKFAST

On the 7th of September, I set off to meet Mr. McKinley for Women in the Defence Force Breakfast on the Newcastle Foreshore. When we arrived we listened to different women talk about their lives, achievements and success in the Defence Force. There were women there representing all three services; the Air Force, the Army and the Navy. Listening to the women talk about their lives and jobs inspired me a lot more, and gave me more knowledge about being in the defence force than I had known before. Finding out that I could be in a career that I am able to enjoy, travel, learn, lead and inspire others gave me a lot more motivation and greater sense of being in the Defence Force. It was a fantastic experience, and I greatly appreciate Mr. McKinley for giving me the opportunity to go! Thank you.

- **Breeanna Gregory, Year 10 student**



PRINCIPAL'S MESSAGE

Vandalism and students on school ground after hours.

Over the weekend the school was vandalised by people who were on the grounds after school hours. This vandalism included the smashing of a glass door in an attempt to gain entry to a building, damaging window screens, and the removal of plants and throwing these onto the roof of a number of buildings.

Whilst it is disappointing that young people would do this to our school I would like parents to remind their children that they are not allowed on school grounds out of hours without permission and under supervision of staff.

It is important for two reasons the first being if they were to get seriously injured or hurt they may be unable to get the necessary assistance needed. The second reason being they then can't be accused of damaging school property when damage has been done by someone else.

Legally anyone on school grounds out of hours without the authority of the principal can be charged under the Inclosed Lands Protection Act. Fines of up to \$2200 can be issued for being on the grounds without permission.

The Inclosed Lands Protection Act provides a basis for taking action in relation to what is commonly referred to as trespass.

Situations where principals might consider issuing a notice prohibiting entry include:

- where a member of the community constantly traverses the school grounds as a "short cut" and where a right of way does not exist.
- Students continually or repeatedly on school grounds out of hours.

Schools are specifically defined as "Inclosed lands" under the Act. The Act addresses a number of offences relevant to schools such as:

- entry without lawful excuse;
- remaining on enclosed lands after a request to leave;
- behaving in an offensive manner after a request to leave;
- giving a false name and address.

Whilst I know that school grounds are 'great places' for skate boarding or scooter riding students and others need to find another more suitable place. Parents, please ensure your children are not coming onto school grounds out of hours.

Whooping cough alert

NSW Health is warning parents to be on alert for whooping cough following an increase in the number of school-aged children diagnosed with the disease over the last few weeks.

For more information see: <https://www.det.nsw.edu.au/about-us/news-at-det/news/whooping-cough-alert>

Schools Spectacular

The 2010 Schools Spectacular performances will be held at the Entertainment Centre in Sydney on:

- Friday 26 November - 1pm preview & 8pm
- Saturday 27 November - 2pm & 8pm.

For more information and ticket bookings go to www.schoolsspectacular.com.au

- **Don Hudson, Principal.**

FROM THE SECONDARY DEPUTY PRINCIPAL'S DESK

Our Year 12 students are continuing with their HSC exams and will shortly complete their studies. Staff, students and parents will celebrate the completion of Year 12 at a formal dinner at the Bulahdelah Bowling Club on Thursday 11th November.

Year 11 will be engaged in interviews with Mr. McKinley this week in order to plan the next stage of their careers. They will be discussing course choices for 2011 and post school options. Year 10 are also entering the last few weeks of their academic year. Having recently completed their end of year exams, they will tackle their School Certificate next Monday and Tuesday. A note will be coming home shortly, informing parents about end of year activities and key dates for Year 10.

This week secondary students will commence fortnightly sport. The program will run over the next four weeks and will enable students from Year 8 to Year 11 to travel beyond Bulahdelah to experience a wider range of recreational activities in larger centres like Forster.

As part of our Transition Program into high school, our 2011 Year 7 Adviser will be visiting our local primary schools in the next couple of weeks to gather information about children intending to enrol next year. The school will also be hosting students from the Myall Learning Community for a sports day this week and an orientation day in early December to help our 2011 students move successfully into high school and meet some of their peers prior to commencing next year.

Finally can I request that parents please contact the school either by phone or note to inform us if your child is absent, particularly for extended periods. It is a legal requirement that parents provide an explanation for student absences from school.

- **Roger Horton, Secondary Deputy Principal**

PRIMARY HAPPENINGS FROM THE DEPUTY PRINCIPAL

The term continues to roll on and the students continue their learning across a range of disciplines. Some of our staff members have also been involved in professional learning. Five staff members have been participating in "**Accelerated Literacy**" training. **Accelerated Literacy** is a teaching strategy designed to dramatically improve literacy skills. This approach has proven success with Aboriginal students. The strategy targets students who have failed to make appropriate literacy gains in school, those who are in danger of falling behind and is also suitable to develop high level literacy skills for all students. Features of the **Accelerated Literacy** pedagogy:

- Rapid literacy gains
- Measurable growth
- Comprehensive development of literacy
- Strong oral language development
- High level of motivation in learners
- Culturally inclusive access to academic literate discourse
- Can be applied from Kindergarten to post Year 12
- Whole class program
- Application across all subjects
- Emphasises quality literature
- Strong theoretical base

Staff who have not been trained in 2010 will be trained in 2011, to ensure continuity of teaching K-6. It is important that teachers continue to learn, so that we can continually improve our teaching practice and thus improve the learning outcomes for all students. If we are to be a true learning community, then ALL students and staff need to embrace the concept of lifelong learning!!

Our 2011 kindergarten students enjoyed their first taste of "big school" last Wednesday. Orientation will continue for the next 3 weeks.

Due to numbers in 2011, we are planning to start the year, at this stage, with six primary classes. Classes have not been finalised. Staff will be working on this between now and the end of the year.

Some dates for your diary: 1/11 Assembly; 3/11 Kindergarten Orientation, MLC Sports Day; 4/11 BCS tennis championships – Stage 3; 5/11 BCS tennis championships – Stage 2; 8/11 Swimming commences; 10/11 Kindergarten Orientation. - - Sally Thompson, Primary Deputy Principal.

EXTERNAL MATHEMATICS RESULTS

Selected students from Years 7 – 10 have competed in the prestigious University of New South Wales Global Mathematics Assessment in recent months. The following results were gained:

Year 7:	Ellie Gooch	Participation
	Karl Price	Credit
Year 8:	Bradley Kirkpatrick	Credit
	Megan Harrington	Participation
Year 9:	Alexandra Moran	Participation
	Skye Hammerl	Participation
	Samantha Rinortner	Credit
Year 10:	Sarah Stuart	Distinction
	Samantha Clouten	Credit
	Mary-Ann Gooch	Credit
	Mitchell Blanch	Participation
Year 11:	Jakov Pekich	Credit
	Marlies Hammerl	Participation
	Vanessa Sewell	Participation
	In addition, two BCS students entered	the Australian Mathematics Competition
Year 9:	Joshua Barnett	Proficiency
Year 10:	Sarah Stuart	Participation

Congratulations to all students who participated
 - **Wayne Holt, Head Teacher Mathematics**

ACTIVITIES, EXCURSIONS – Participation



KARATE WORKSHOP:

On Thursday 28th October, 2010 Middle School students were given the opportunity to attend a karate seminar with Karate Master Sumi. This seminar was to build on self-defence principles already learnt during karate lessons in terms 3 and 4. Sessions were designed to assist in building self-control, self discipline and self-esteem.

HSC ENGLISH STUDY DAY:

Year 12 students were given the opportunity to attend a HSC English Study Day at the Convention Centre, Darling Harbour, Sydney on 1st November. This HSC Study Day assists students to broaden their knowledge of the HSC topics studied, helping them to acquire additional study skills and listen to experienced lecturers and authors. Travel is by school mini bus and students were accompanied by supervising teacher Ms. Heather Moncrieff.

ANNUAL PRIMARY TENNIS KNOCKOUT CHAMPIONSHIPS:

Weather permitting students from Years 3 to 6 will participate in these Championships on Thursday 4th and Friday 5th November, 2010. The venue is Bulahdelah Tennis Club. Stage 3 will compete on Thursday with Stage 2 playing on Friday with the school mini bus ferrying the students between the school and the courts as needed. Sports uniform is required for this excursion. Students will need to take their recess and lunch food and drink for the day. They should provide their own racquets, hats and sunscreen. (Photo shows 2009 participants.)



ART EXPRESS EXCURSION:

Visual Arts students in Year 11 will attend an excursion to Taree Regional Gallery on Friday 12th November. This is an opportunity for Visual Art students to view Art Express artworks from the 2009 Higher School Certificate. The cost is \$10:00 per student and travel will be by school mini bus. Students will be accompanied by Mrs. Sue Cross. A reminder that the permission note and payment are due at the School Administration office no later than 10:55am on Tuesday 9th November, 2010.

BIKE CHALLENGE SYDNEY EXCURSION:



Wednesday 17th November, will see the Bike Challenge 2010 participants travel to Sydney to finalise the 2010 Bike Challenge by donating the sponsorship cheques and to visit the organisations which the school supported, i.e. Stewart House and Youth Off the Streets. The cost of this trip is \$15:00 per student and is being partly subsidised by Bike Challenge funds, but includes a trip from Circular Quay to Manly by ferry. Morning tea and afternoon tea will be provided by Youth Off the Streets and Stewart House. Students should bring a cut lunch/dinner for the day or money if they wish to purchase food. Parents are invited to join us on the bus at a cost of

\$25. Seating will be limited so first in will go. Parents could car pool instead. School uniform is required for this excursion. The permission note and payment of \$ 15:00 are due at the School Administration Office no later than 10.55am on Wednesday 3rd November, 2010. (Photo shows 2010 Bike Challenge Team returning home behind the school mini bus – BCS, going places.)

VISITING VICTORIAN BAND:

Students in Kindergarten to Year 6 and Year 11 music students will be able to attend workshops and performances in the school hall with a visiting band from Victoria. This is an excellent opportunity to view quality performances by other students and work with them in a workshop. Our students will develop their musical skills through their work with our visitors.

PRIMARY CAPTAIN ELECTIONS



Although our secondary leaders are elected at the end of term 2 and serve for four terms, thus allowing them study time in their Higher School Certificate year; our eight primary leaders are elected at the end of each year. They each serve one term the following year. Nominations for the positions have been open from the commencement of this term and will be printed in our next newsletter dated **15th November**. On that Monday the nominees will make a speech on the **Primary Merit Assembly and parents,**

friends and community members are welcome to attend.

(Photo shows Hannah-Rose Rietveld being "pinned" as Term 1, 2010 captain.)

Nutrition Note

Helpful hints for school-aged children:

School-aged children (ages 6 to 12) continue to need healthy foods and nutritious snacks. They have a consistent but slow rate of growth and usually eat four to five times a day (including snacks). Many food habits, likes, and dislikes are established during this time. Family, friends, and the media (especially TV) influence their food choices and eating habits. School-aged children are often willing to eat a wider variety of foods than their younger siblings. Eating healthy after-school snacks are important, as these snacks may contribute up to one-third of the total calorie intake for the day. School-aged children have developed more advanced feeding skills, are better at feeding skills, and are able to help with meal preparation. The following are some helpful mealtime hints for school-aged children:

- Always serve breakfast, even if it has to be "on the run." Some ideas for a quick, healthy breakfast include the following: fruit, milk, bagel, cheese toast, cereal, peanut butter sandwich
- Take advantage of big appetites after school by serving healthy snacks such as the following: fruit, vegetables and dip, yogurt, sandwich, cheese and crackers, milk and cereal set good examples for eating habits.
- Allow children to help with meal planning and preparation. Serve meals at the table, instead of in front of the television, to avoid distractions.



The BCS Canteen staff **Sheryl Barry (Canteen Manager)** and **Stephanie Dennis (Assistant)** continue to provide a healthy and varied selection of foods for our students and staff. They prepare healthy one-off specials each week. These specials are publicised each fortnight in the school newsletter, on the school web site and the daily notices. Students and staff are invited to order from this list in addition to the Menu/Price List. Specials this fortnight are:

DAY	NOV	RECESS	COST	LUNCH	COST
MON	01	Chicken Wraps	\$ 2:50	Fish Salad	\$ 5:00
TUES	02	Mini Pizzas	\$ 3:00	Quiche & Salad	\$ 4:50
WEDS	03	Ham & Cheese Muffins	\$ 2:50	Stir-fry & Rice	\$ 3:50
THURS	04	Wedges S/C Chilli/S	\$ 3:00	Vol au Vonts (Chicken)	\$ 3:00
FRI	05	Scones Jam & Cream	\$ 2:00	Calamari & Salad	\$ 5:00
MON	08	Nachos	\$ 3:00	Chicken Fettuccini	\$ 3:50
TUES	09	Banana Cake	\$ 1:50	Sweet & Sour Pork & Rice	\$ 3:00
WEDS	10	Prawn Parcels	\$ 3:00	Prawn & Lettuce & Seafood Sauce Wrap	\$ 3:50
THURS	11	Chicken Wings	\$ 3:00	Caesar Salad (Chicken)	\$ 5:00
FRI	12	Carrot Cake	\$ 1:50	Seafood Salad	\$ 5:00

The new **PRICE/LIST MENU** was distributed with our last newsletter dated 18th October. If you did not receive it please contact the School Administration Office.

The Canteen Menu follows the guidelines of the NSW Healthy School Canteen Policy. A **Menu/Price List** is included with every enrolment pack or can be obtained at the School Administration Office. **Reminder:** If your child's order does not have the correct price/money, your student will be given a healthy, lower cost alternative. Please note also that MEAL **DEALS** which are a choice of two alternatives where, **if the student orders by 9am**, the cost is less than the advertised Menu price.

HOUSEKEEPING

PRICE INCREASE FOR CALCULATORS

Please be advised the due to a supplier price rise the cost of a calculator purchased through the school has increased to \$30:00.

OFFICE HOURS:

Your school's Administration Office is open **Monday to Friday from 8:10am to 3:30pm. The exception is Thursday Week A** – the office will close at **3:00pm** to enable SASS to hold a fortnightly meeting. **Early closing dates for Term 4 are 11th & 25th November and 9th December. Please mark these dates on your calendar.**



NEXT NEWSLETTER: Monday 15th November – Issue 17



BCS distributes the *Tall Timbers* newsletter by email. Please make sure your mailbox is cleared.

Also, the newsletter is available on the school webpage.

PLEASE NOTE that as from this term, a small number of printed copies of the newsletter will be available in the foyer of the school administration office for those parents who require a printed version and for visitors to the school. **Newsletter distribution dates for term 4 are: 15th & 29th November and 13th December. Please mark these dates on your home calendar and remind your student to collect your copy.**



EMERGENCY CONTACTS



If you have changed the address, telephone number or emergency contact for your student, please notify the Administration Office as soon as possible so that records can be kept up-to-date.

This is particularly important in cases of illness or other emergencies.

Thank you for your co-operation

LATENESS TO SCHOOL

Punctuality is extremely important. However, on occasions when a student is unavoidably late, he or she **must bring a note** explaining the lateness and **sign in** at the School Administration Office. This is essential so that accurate records can be kept, especially in the case of an emergency.

Parents are reminded that the playground/classrooms are not supervised prior to **8:30am**. Therefore for **safety reasons we ask that you do not send your child to school before this time.**

MAKE THE WORLD SMALLER BY 'MATCHING' WITH A STUDENT NOW

An international high school exchange student wishes to study in Australia from February through June 2011. Australian volunteer host family chooses compatible selected international student and makes him/her a family member. How? Contact

**Southern Cross Cultural Exchange 1800 500 501 or scceaust@scce.com.au
www.scce.com.au**

CAREERS CORNER

AUTOMOTIVE APPRENTICE SHIP: Are you considering an automotive apprenticeship? Local business Tea Gardens Tyre Power is seeking an apprentice in this field. Please phone Karen on 49972 995 to register your interest.

INTERESTED IN A CAREER IN CARPENTRY? Come see Mr McKinley regarding a possible Apprenticeship in the Bulahdelah area.

TRIAL INTRODUCTORY FLIGHT (TIF)

Experience the joy of flight with you at the controls. Get an assessment of your ability to fly and be in command of an aeroplane. A TIF could be the start of a career in aviation, satisfying a business commuting need or the satisfaction of an "always wanted to fly" retirement activity. Test yourself or your child's aptitude for a career in Aviation. Cost \$105.!



The TIF introduces you to the aircraft, take offs and landings, in-flight cruising and control, and a post flight assessment of your aptitude. The next stage of your flying career is learning to command and control the aircraft, flying in the training area. You may be permitted to fly solo after 10 hours and after 20 hours you may reach the standard necessary for

General Flying Proficiency Test (GFPT): This allows you to fly in the aerodrome circuit or associated training area with friends on the approval of your Flying Instructor. Approximate cost \$5,000 The next stage in your flying career is a series of cross country flying exercises totalling 20 hours to teach you the principles of weather, navigation, and flight planning. On successful completion you will qualify for a Private Pilot Licence (PPL). **This permits you to fly anywhere in Australia & approximate additional cost of \$6,000. The Club also provides training for Night Visual Flying (NVFR) and Commercial Pilots Licence (CPL).** For further information call the club on **(02) 6553 9301**. Further info at web site www.mrac.org.au **Come and Fly With MANNING RIVER AERO CLUB At Taree Airport CUNDELTOWN NSW 2430 (Just off the Pacific Highway)**

RFACA LEARN TO FLY SCHOLARSHIP COMPETITION:

Commenced 1st October, 2010; Closing date 4th March 2011; return date 11th March, 2011. Four prizes valued at \$7700 each (including GST). Four chances to win in one draw. Age: Must be 16 years at announcement of winner. Flying Completed: Flying must be 16 years at announcement of winner and the flying completed within 12 months from winning competition. To enter – take a Trial Introductory Flight with a RFACA member club. CFI's will assess each students and choose the top 10% of entrants at each Club. These names will be put in a barrel and the four winners' names will be drawn. The prizes are not redeemable or transferrable. The announcement of winners will be published in "The Australian" on 21st

CAREERS ADVICE

The Careers Adviser, **Mr. Mick McKinley** is available to all students and their parents by appointment to discuss any matter relating to career or education choices, job-seeking skills or other related areas. Students have Careers lessons in Year 10.

Students have access to special lectures, demonstrations, visits and excursions arranged when possible to assist them in their career choice. A Work Experience program is offered each year to all Year 10 -12 students by application

SUMMER SAFETY FOR KIDS

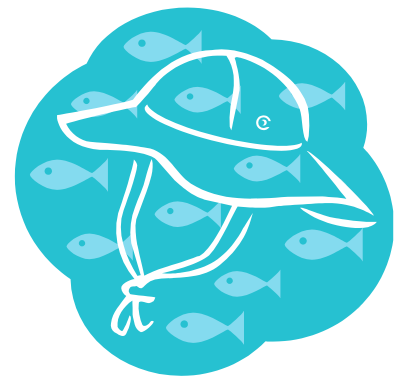
SUNSAFE ADVICE:

Babies under 6 months:

- The two main recommendations from the AAP to prevent sunburn are to avoid sun exposure, and dress infants in lightweight long pants, long-sleeved shirts, and brimmed hats that shade the neck to prevent sunburn. However when adequate clothing and shade are not available, parents can apply a minimal amount of sunscreen with at least 15 SPF (sun protection factor) to small areas, such as the infant's face and the back of the hands. If an infant gets sunburn, apply cold compresses to the affected area.

For All Other Children:

- The first, and best, line of defense against the sun is covering up. Wear a hat with a three-inch brim or a bill facing forward, sunglasses (look for sunglasses that block 99-100% of ultraviolet rays), and cotton clothing with a tight weave.
- Stay in the shade whenever possible, and limit sun exposure during the peak intensity hours - between 10 a.m. and 4 p.m.
- On both sunny and cloudy days use a sunscreen with an SPF of 15 or greater that protects against UVB and UVA rays.
- Be sure to apply enough sunscreen - about one ounce per sitting for a young adult.
- Reapply sunscreen every two hours, or after swimming or sweating.
- Use extra caution near water and sand (and even snow!) as they reflect UV rays and may result in sunburn more quickly.



HEAT STRESS IN EXERCISING CHILDREN



- The intensity of activities that last 15 minutes or more should be reduced whenever high heat and humidity reach critical levels.
 - At the beginning of a strenuous exercise program or after traveling to a warmer climate, the intensity and duration of exercise should be limited initially and then gradually increased during a period of 10 to 14 days to accomplish acclimatization to the heat.
 - Before prolonged physical activity, the child should be well-hydrated. During the activity, periodic drinking should be enforced, for example, each 20 minutes, 5 oz of cold tap water or a flavored sports drink for a child weighing 90 lbs, and 9 oz for an adolescent weighing 130 lbs, even if the child does not feel thirsty.
 - Clothing should be light-colored and lightweight and limited to one layer of absorbent material to facilitate evaporation of sweat. Sweat-saturated shirts should be replaced by dry clothing.
- Practices and games played in the heat should be shortened and more frequent water/hydration breaks should be instituted.

COMMUNITY HAPPENINGS

BULAHDELAH SHOW SOCIETY INC. presents the **SCHOOL PAVILION NIGHT** on **WEDNESDAY 10TH NOVEMBER – FREE admittance.** . (Please note change of day from Thursday as in previous years.) Although this will not be a late night, the Community Choir will present a bracket of songs and the Public Speaking will be contested Please **email Bev Maybury by 11:15am on Friday 5th November, 2010** with the name, stage of the contestant and title of the speech to enable it to be included in the program. bev.maybury@det.nsw.edu.au **THE YOUNG ACHIEVER OF THE YEAR** will be announced at this venue as will the place getters from the Art and Creative Writing Competitions.. The **School Pavilion Night** will commence at **7:00pm sharp** with a Sausage Sizzle from 6:00pm. (Bring your money with you – sandwich \$2:50; can of drink \$2:00.)



The **annual Show** is set down for **FRIDAY 19TH and SATURDAY 20TH NOVEMBER**, closing at 11pm both nights **Tickets** are available from the Holiday Coast Credit Union and Daphne's Fruit Shop. (See the web page for prices.) **Membership** for the Society is now available and this entitles the bearer to one pass for both Show days and to another function run by the Society as it sees fit. A full member also receives passes for his/her children less than 16 years of age as well as the member being able to attend meetings of the Bulahdelah Show Society Inc and to vote at the Annual General Meeting. The cost of full membership is \$10 per adult per annum. Junior membership is also available. The **Show's attractions** will include plenty of interest for children and adults alike - the U Beaut Utes, Hunter Valley Tractor & Machinery exhibits, chain saws, post splitting, wood chop, beef cattle (with the Led Steer Class), working dogs, animal nursery, pet show, demolition derby, fireworks, side show alley and entertainment including Brooke Harvey. The **Grand Parade** will be held between 2pm and 2:30pm on the Saturday after which Federal Member for Paterson Bob Baldwin will officially open the Show.. The **pavilions** will feature the usual school displays and all the other interesting displays for which Bulahdelah is fast developing a wonderful reputation .. (**Contact Chief Steward Margaret Mears on 49974147**) **Remember, there are many sections open for students.**

Bulahdelah Show is a family show run by members of the community and profits are returned to community groups. However, the Show cannot happen without the valued assistance of the **volunteers** who help out in many areas. **Sponsorship** is the other mainstay of the Bulahdelah Show and the members thank all those businesses and individuals who have donated funds or services. If you think you could assist in any way, either as a volunteer or as a sponsor, please do not hesitate to get in touch with the Society – your offer will be gratefully received and it is not too late to do so. For more information about the 2010 Show log onto the society's website bulahdelahshowsociety.org.au or contact the **Show Secretary on 49974392.** (Photo is of BCS Led Steer competitors at the 2009 show.)

SINBAD THE SAILOR SAILS INTO TOWN

The senior students from Elizabeth Grimshaw School of Dance are assisting *Sinbad the Sailor* to sail into town in November but....the story has a twist! Come to the cabaret and see students from Bulahdelah Central and Bungwahl Public Schools accompany adult dancers to perform the story for your viewing delight. Bookings are essential as there are only three performances at Bulahdelah School of Arts on 5th, 6th and 12th November. The concert is a bi-annual event which is always much anticipated and well attended. For the dancers and choreographers it is the culmination of two years of dedicated practice and, on the night, the hard work of the costumers, set designers and lighting crew are also on display. For bookings please ring Lee (49976228) or Hazel (49978121). Tickets are \$15:00 for secondary students and adults; \$10:00 for primary students and \$10:00 for pensioners. Come along for a great night of entertainment.

(Photo shows Jan Warner and staff member Rhonda Wrigley ready to welcome Sinbad to town.)



DO YOU HAVE PRIDE?

Under the Positive Behaviour Learning (PBL) Program Bulahdelah Central School has created the “buzz” word **PRIDE**. Students and staff are asked to implement the buzz word in their behaviours.

<p>P</p>	 <p>Participation We promote participation and school spirit in an environment that values the participation of students, staff and the wider community. Are you actively involved in the life of the school?</p>
<p>R</p>	<p>Respect We respect the rights of others, ourselves and the school in an environment of harmony and personal responsibility. Do you respect yourself, respect others and take responsibility for you own actions?</p> 
<p>I</p>	<p>Innovation We initiate and continue to improve as individuals, teams and the school. Can you find a better, smarter or more creative way?</p> 
<p>D</p>	<p>Determination We work towards quality, success and recognition in a persevering manner. Do you keep on working towards your goals?</p> 
<p>E</p>	<p>Excellence We do our best to achieve excellence. Have you done your best?</p> 

BCS BILLBOARD

Dates are correct at time of publication. Please do not hesitate to contact the School Administration Office if you have any queries.

2010		
November	01	Year 12 English Study Excursion; Newsletter published by email and on webpage; Primary Assembly
	03	Kindergarten Orientation: MLC Sports Day
	04	Primary Tennis Knockout Championships Stage 3 (Stage 2 5 th)
	05	Entries close at BCS for Bulahdelah Show School Pavilion Night Public Speaking Competition
	08	School Certificate examinations till 12th November; Primary Swimming commences
	08	National Recycling Week till 14 th
	10	Final HSC examination; Bulahdelah Show School Pavilion Night; Kinder Orientation
	11	Year 12 Graduation Dinner
	11	Armistice Day - Lest We Forget
	11	School office closes at 3pm
	12	Art Express Excursion Taree
	15	All My Own Work begins
	15	Newsletter published by email and on webpage with primary captain nominations; Primary Merit Assembly where captain nominees present their speech.
	17	Bike Challenge Sydney Excursion
	19	Bulahdelah Show (& 20th)
	22	Work Experience Week
	23	Visiting Victorian Band
25	School office closes at 3pm	
29	Work Experience Week; Year 9 Canberra Excursion; Newsletter published by email and on webpage;	
December	01	Year 9 Sydney Excursion (up to and including 3 rd December)
	07	Year 7 Orientation
	09	School office closes at 3pm
	13	Newsletter published by email and on webpage;
	14	Presentation Day: Primary 10am, Secondary 1pm
	15	Last day for students to attend in 2010

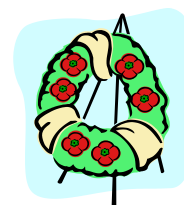


National Recycling Week 8th till 14th: In November, 1996 Planet Ark founded National Recycling Week as a community education and media campaign. The aim was to bring a national focus to recycling and the broader themes of minimising waste and managing material resources.

Armistice Day: The eleventh hour of the eleventh day of the eleventh month marks the moment in 1918 when fighting ceased on the Western Front marking the end of World War I. After four years of continuous warfare the Germans were driven back by the allied armies and they called for a suspension of fighting. At 11:00am there is one minute of silence to remember those who died at war.

Lest We Forget

XXXXXXXXXXXX



WORDS OF WISDOM

An unexamined life is a life not worth living
- Socrates